

## REMOTE DATA TRANSMISSION UNIT

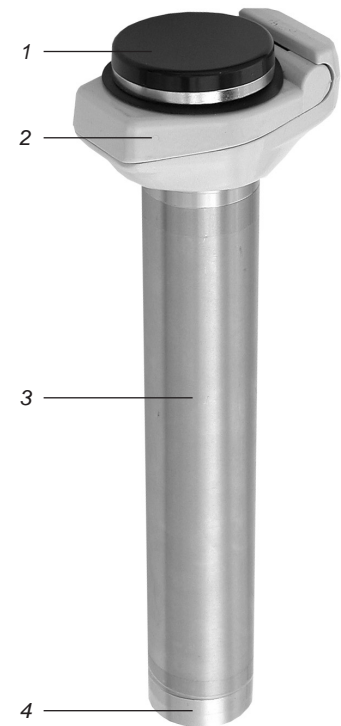
## GSM-1

SUITABLE FOR USE WITH KELLER SERIES 30 AND DCX-DATA LOGGER

The days are gone when you had to drive every day from measuring station to measuring station in every kind of weather to record the latest water level or read out the installed data logger, because the GSM-1 now sends measuring data by SMS or data link directly to your office!

The GSM-1 from KELLER makes this possible, an instrument which offers the following advantages:

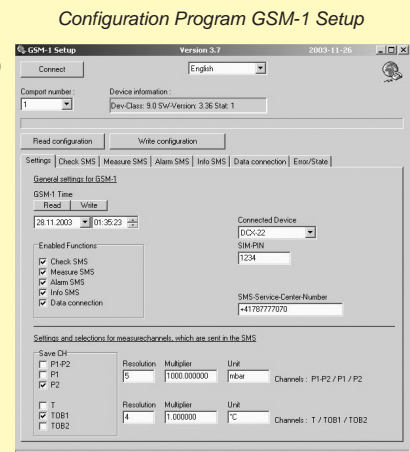
- Autonomous (battery-powered). Up to 5 years service life, depending on the configuration
- Waterproof (can be briefly flooded)
- Data measuring and collecting in a fixed time interval. All data transmitted by SMS
- Alarm SMS transmitted for important occurrences (changes in level relative to time / a drop occurs below a level, or the level is exceeded)
- Periodic transmission of system information via SMS
- Inquiry of incoming SMS's with control commands
- Direct data link from PC in the office to the DCX in the field. The stored measuring data can be read out via this connection using the modem reader software, or the DCX can be reconfigured
- SMS content can be configured (text, measuring channels and resolution of measuring values, redirection of SMS to fax or e-mail)
- Housing for integration in 2" sounding pipe closure
- Connection provided for commercially-available GSM antenna. Sounding pipe closure with integrated antenna available
- Simple, structured configuration PC software
- Utilization of prepaid card possible (no subscription charge!)
- Configuration of connected DCX or Series 30 transmitter via the same interface used with the GSM-1



- 1 Integrated antenna
- 2 Sounding pipe closure
- 3 GSM-1 housing
- 4 DCX / Series 30 connection

### SPECIFICATIONS:

Connection	Suited for Series 30 transmitters with voltage output (3-wire) or Series DCX data loggers
Supply	Lithium-Battery 3,6 V / 16,5 Ah
Battery Life	Max. 5 years, depending on environmental conditions and configuration: Up to 3'000 SMS or 400 data connections (read-out of DCX-storage).
Output	GSM dual band 900/1800 MHz (SMS or data connection V.32 / V.34 / V.110)
Interface	RS 485
Temperature Range	-10 ... 40 °C
Shortest Meas.-/Sending Rate	5 minutes
Material Housing	Stainless steel 316L (DIN 1.4435)
Dimensions	48 x 255 mm (diameter x length)



Subject to alterations

02/04